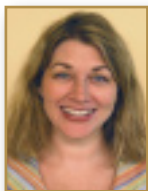


Perspectives

CONTRIBUTORS



Kelly Andrews brings more than 12 years experience in advertising and marketing to her role as strategic planner at MicroMass Communications. An accomplished focus group moderator and ethnographic researcher, Andrews applies her anthropologist's eye to understanding what motivates consumers both within and outside of pharma. She also has expertise in brand-building initiatives and has helped clients create award-winning campaigns. Before joining MicroMass, Andrews was an account planner for a major advertising agency, where her account responsibilities included The Ad Council's Breastfeeding Initiative (Department of HHS), among others. She can be reached by e-mail at kelly.andrews@micromass.com, or by telephone at (919) 256-2476. Turn to page 44 to read her article.



Liz O'Neil is vice president, director of channel marketing of EvoLogue (www.commonhealth.com/evologue), CommonHealth's full-service consumer agency that provides insight-driven, behavioral-marketing services to help improve the dialogue between consumers and healthcare professional. O'Neil can be reached by e-mail at loneil@commonhealth.com, or by telephone at 973-352-4198. Turn to page 27 to read her article.



Keith D'Oria, MA, is managing editor for Physician's Weekly and Pri-Med Patient Education Center, where he oversees all content and products that are designed to educate physicians and/or patients about different disease states in various health care settings. D'Oria can be reached by e-mail at keithd@physweekly.com. To read his article, turn to page 27.



Janet Conley is a senior vice president, creative services, at MedAccess. With more than 20 years of agency experience, she spearheads the MedAccess West creative team, paving the way for a talented group of art directors and copywriters to develop strategic, attention-getting campaigns. She has implemented and overseen several product launches for a wide array of pharmaceutical accounts in neurology, ophthalmology, cardiology, HIV/AIDS, women's health, dermatology, and pulmonology. Prior to joining MedAccess, Conley honed her promotional skills with Regan Campbell Ward•McCann, Torre Lazur McCann West, and FCB HealthCare. She can be reached by e-mail at jconley@acinj.com. To read the article she co-wrote with colleague Didi Discar, turn to page 12.



Amy Cowan is the head of industry for healthcare advertising at Google. She is responsible for helping healthcare advertisers reach consumers through both Google and YouTube. She can be reached by e-mail at amyc@google.com. To read her article about how to effectively communicate with empowered patients online, turn to page 34.



Didi Discar is a partner at MedAccess. She has roots in pharmaceutical brand management and biomedical engineering. She relies on her industry knowledge and experience to build strategic branding goals while fostering a seamless integration between agency and client. Discar has successfully managed eight national and global pharmaceutical brands and was instrumental in the launches of Alphagan and Restasis while at Allergan. She also has gained invaluable managed market experience from her time at Astra Merck and Wyeth-Ayerst. She can be reached by e-mail at ddiscar@acinj.com. Turn to page 12 to read the article she co-wrote with colleague Janet Conley.



Mark Miller is senior vice president of the strategic and analytic consulting group for healthcare at Epsilon, a full-service marketing company. Miller and his team collaborate with client brand teams to develop direct-to-consumer and direct-to-physician marketing campaigns. He can be reached by e-mail at mmiller@epsilon.com, or by telephone at (617) 571-7181. To read his article, turn to page 23.



Laura Bohorquez is an account supervisor at Bromley Communications' Health and Wellness practice in New York. Founded almost 30 years ago, Bromley Communications, part of Publicis Groupe, has consistently been ranked among the top U.S. Hispanic marketing communication companies and is distinguished for its strategic research and consumer understanding. Bohorquez has managed the health insurance category for the agency since 2006. Bohorquez can be reached by e-mail at laura.bohorquez@bromcomm.com. To read her article, turn to page 51.



Marc Benjamin is co-founder and managing partner of Convergence Point Media LLC (www.convergencepointmedia.com), a leading specialty agency with deep expertise in driving qualified, engaged traffic to pharmaceutical Web sites and relationship marketing programs. Convergence Point partners with its clients to develop ROI-driven strategies for branded and unbranded product and condition sites targeting patients, caregivers and healthcare professionals. Benjamin can be reached by e-mail at mberjamin@convergencepointmedia.com. Turn to page 17 to read his article.



John Tapper, PhD, is president, marketing insights, of KantarHealth, the world's largest healthcare-focused primary research and consulting company. Formed by uniting Consumer Health Sciences, MattsonJack, TNS Healthcare and Ziment, KantarHealth is the leading next-generation decision support partner, delivering evidence-based business guidance to support the global and local success of pharmaceutical and biotech clients. Tapper can be reached by telephone at (773) 472-1564, or by e-mail at John.Tapper@kantarhealth.com. To read his article, turn to page 48.